

VACANT LAND
15.55 Acres

MAP
OF THE
TOWN
OF

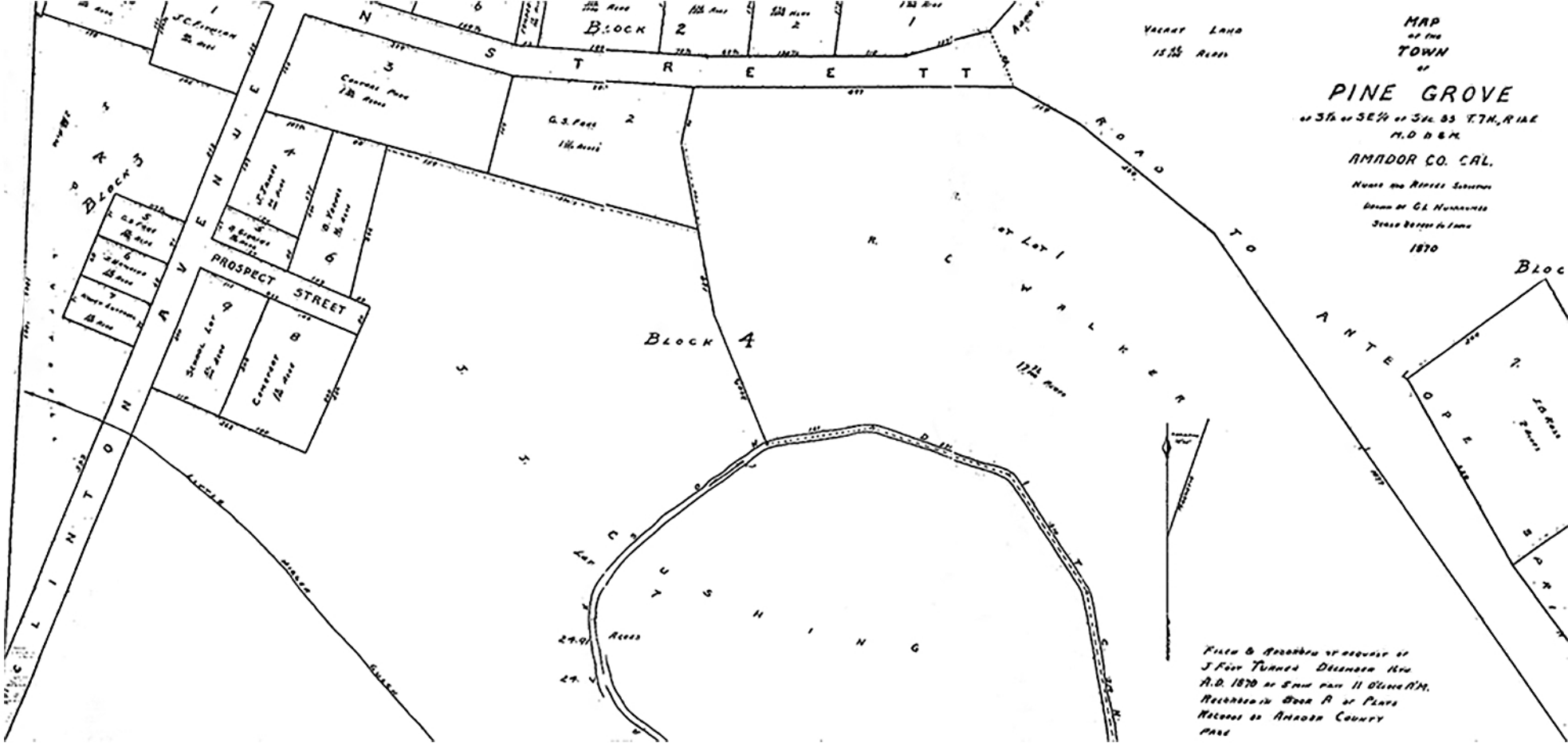
PINE GROVE

of 35th of SE 1/4 of Sec 85 T.7N., R.12E
M.D. & B.M.

AMADOR CO. CAL.

MADE AND REPRODUCED
UNDER THE SUPERVISION
OF G. L. HUNTER
STATE SURVEYOR IN CHARGE

1870



FILED & RECORDED AT REQUEST OF
J. C. TURNER DECEASED BY
A. D. 1870 BY SAID PART II SURVEYOR.
RECORDED IN BOOK A OF PLATS
RECORDS OF AMADOR COUNTY
CALIF.